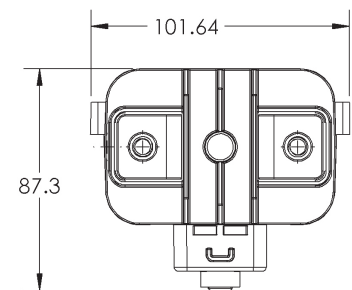
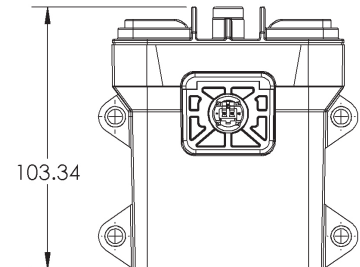


High Voltage Battery Disconnect with Passive/Active Function



PRODUCT SPECIFICATIONS

Specifications	Units	Data
Rated Voltage	Volts	1000
Continuous Current Rating at 85C	Amps	400
Max Interrupt Current at 1000V and 27μH	Amps	10,000
Max Resistance before opening	mΩ	.150
Max Clear Time	mS	3
Operating Temperature	C	-40 - +85
Shock:1/2SINE, 11mS	G's	75
Vibe: Sinusoidal (500-2000Hz Pk)	G's	30
Storage Temperature	C	-40 - +125
Weight	grams	805
Self Triggering Current Tolerance	Amps	+/- 150
Minimum Dielectric After Trigger	MΩ	5

PART NUMBER SYSTEM

Part Number	Trip Current (Amps)
GFPA410	1000
GFPA415	1500
GFPA420	2000
GFPA425	2500

GFPA INITIATOR DATA

Qualified Acc. To	LV 16 and USCAR
Initiator Resistance	≥ 1.7 Ω and ≤ 2.5 Ω
Triggering Pulse Current	≥ 1.75A/ 0.5mS or ≥1.2A/2.0mS
No-triggering Current	≤0.4A or ≤5.0A/≤4μS
Diagnostic Current	≤100mA