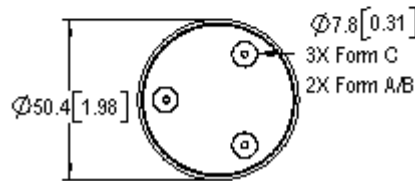
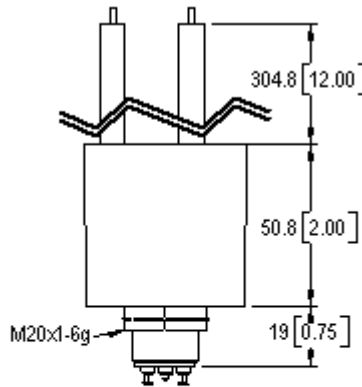


G62A - G62B - G62C

25 kV

Make & Break Load Switching



FEATURES	
G62A & G62B & G62C	
◆	Compact design saves precious space while isolating 25kV
◆	Flying leads provide versatile high voltage connections
◆	Vacuum dielectric for effective arc quenching load switching*

*Consult factory for load switching applications.

PRODUCT SPECIFICATIONS				
Contact & Relay Ratings	Units	G62A	G62B	G62C
Contact Form		A	B	C
Contact Arrangement		SPST-NO	SPST-NC	SPDT
Voltage, Test Max., Contacts & to Base (15 μ A Leakage Max., dc or 60Hz)	kV Peak	30	30	30
Voltage, Operating Max., Contacts & to Base (15 μ A Leakage Max.)				
dc or 60 Hz	kV Peak	25	25	25
2.5 MHz	kV Peak	-	-	-
16 MHz	kV Peak	-	-	-
32 MHz	kV Peak	-	-	-
Current, Continuous Carry Max				
dc or 60 Hz	Amps	18	18	18
2.5 MHz	Amps	-	-	-
16 MHz	Amps	-	-	-
32 MHz	Amps	-	-	-
Coil Hi-Pot (V RMS, 60 Hz)	V	500	500	500
Capacitance				
Across Open Contacts	pF	-	-	-
Contacts to Ground	pF	-	-	-
Resistance, Contact Max @ 1A, 28Vdc	ohms	0.50	0.50	0.50
Operate Time	ms	15	15	15
Release Time	ms	15	15	15
Life, Mechanical	cycles	1 million	1 million	1 million
Weight, Nominal	g (oz)	336 (12)	336 (12)	336 (12)
Vibration, Operating, Sine (55-500 Hz Peak)	G's	10	10	10
Shock, Operating, 1/2 Sine 11ms (Peak)	G's	20	20	20
Temperature Ambient Operating	$^{\circ}$ C	-55 to +85	-55 to +85	-55 to +85

COIL RATINGS			
Nominal, Volts dc	12	26.5	115
Pick-up, Volts dc, Max.	9	18	90
Drop-Out, Volts dc	.5 - 5	1 - 10	5 - 55
Coil Resistance (Ohms \pm 10%)	30	125	2000

Ratings listed are for 25 $^{\circ}$ C, sea level conditions

For more information, refer to
Relay User Instructions

G62 **A** **7** **4** **1**

Contact Form A = SPST-NO B = SPST-NC C = SPDT				
Coil Voltage 7 = 12 Vdc, Turret Terminal 8 = 26.5 Vdc, Turret Terminal 9 = 115 Vdc, Turret Terminal				
High Voltage Connections 4 = Flying Leads, 12" 7 = Flying Leads, 72" 8 = Flying Leads, 36"				
Mounting 1 = Threaded				