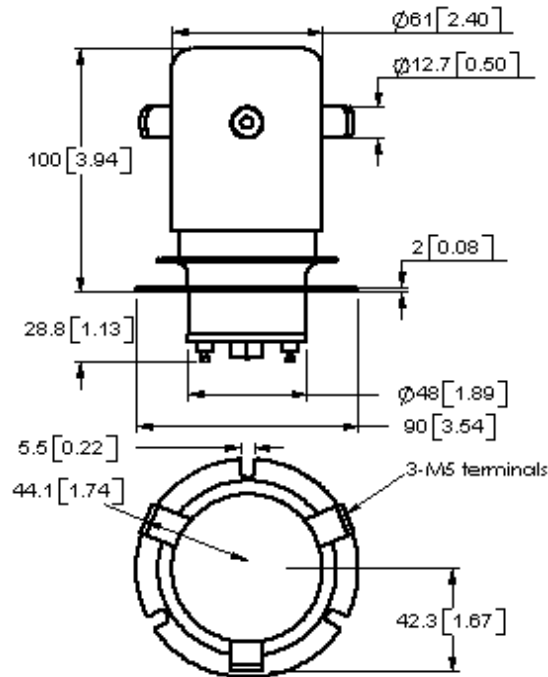


Make & Break Load Switching
 RoHS Compliant, date code 0701 and later

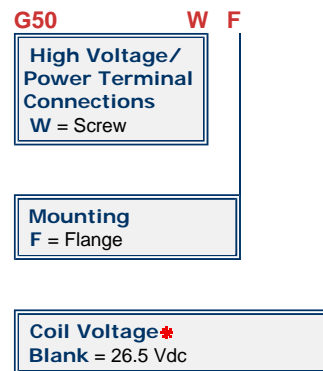


| PRODUCT SPECIFICATIONS | | |
|--|--------------|-------------|
| Contact & Relay Ratings | Units | G50 |
| Contact Form | | C |
| Contact Arrangement | | SPDT |
| Voltage, Test Max., Contacts & to Base (15 μ A Leakage Max., dc or 60Hz) | kV Peak | 30 |
| Voltage, Operating Max., Contacts & to Base (15 μ A Leakage Max.) | | |
| dc or 60 Hz | kV Peak | 25 |
| 2.5 MHz | kV Peak | - |
| 16 MHz | kV Peak | - |
| 32 MHz | kV Peak | - |
| Current, Continuous Carry Max | | |
| dc or 60 Hz | Amps | 110 |
| 2.5 MHz | Amps | - |
| 16 MHz | Amps | - |
| 32 MHz | Amps | - |
| Coil Hi-Pot (V RMS, 60 Hz) | V | 500 |
| Capacitance | | |
| Across Open Contacts | pF | 5 |
| Contacts to Ground | pF | 5 |
| Resistance, Contact Max @ 1A, 28 Vdc | ohms | 0.005 |
| Operate Time | ms | 100 |
| Release Time | ms | 15 |
| Life, Mechanical | cycles | 1 million |
| Weight, Nominal | g (oz) | 1000 (35) |
| Vibration, Operating, Sine (55-500 Hz Peak) | G's | 10 |
| Shock, Operating, 1/2 Sine 11ms (Peak) | G's | 30 |
| Temperature Ambient Operating | $^{\circ}$ C | -55 to +125 |
| Maximum Terminal Temperature | $^{\circ}$ C | 200 |

| COIL RATINGS | |
|------------------------------------|------|
| Nominal, Volts dc | 26.5 |
| Pick-up, Volts dc, Max. | 16 |
| Drop-Out, Volts dc | 1-10 |
| Coil Resistance (Ohms $\pm 10\%$) | 60 |

Ratings listed are for 25 $^{\circ}$ C, sea level conditions

For more information, refer to
[Relay User Instructions](#)



01/11/11